

The Robot Zoo

Meet the Stars of the Exhibition



Platypus

Robot: 2.7 metres long

Actual Size: 30 – 50cm long

Found: Eastern Australia

Eats: Insect larvae, worms, other freshwater insects

Fascinating fact: When the first platypus specimen was brought to Europe 200 years ago, scientists thought it was a fake.

Giraffe

Robot: Shows head and neck only, 2.7 metres tall

Actual Size: up to 5.5m tall

Found: Africa

Eats: Leaves and twigs

Fascinating fact: A giraffe's heart can be up to 60cm across – the size of a beach ball! It has to be big to pump blood all the way up the giraffe's long neck.





Chameleon

Robot: 3 metres long

Actual Size: 3cm to 70cm

Found: Africa, Asia, Europe

Eats: Grasshoppers, locusts, crickets and other insects

Fascinating fact: A chameleon can move each eye on its own, so it can focus on two separate objects at the same time!

Rhinoceros

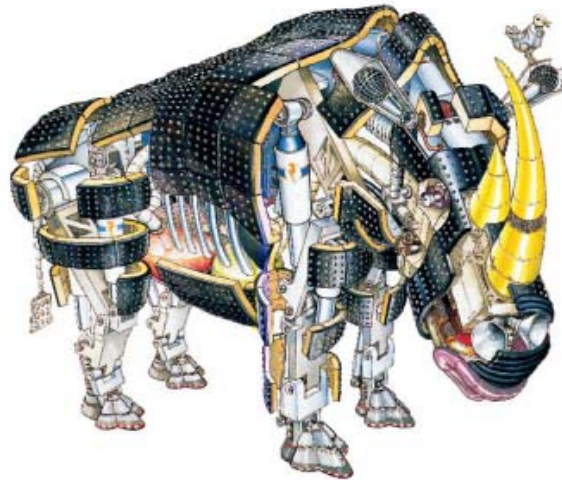
Robot: 2.7 metres long

Actual Size: up to 1.8 metres tall

Found: Africa and Asia

Eats: Plants

Fascinating fact: A group of horses is called a 'herd', a group of rhinos is called a 'crash' – can you imagine why!



House Fly

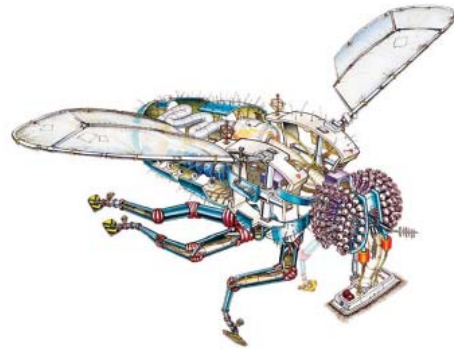
Robot: 1.8 metres long, with a 3 metre wingspan

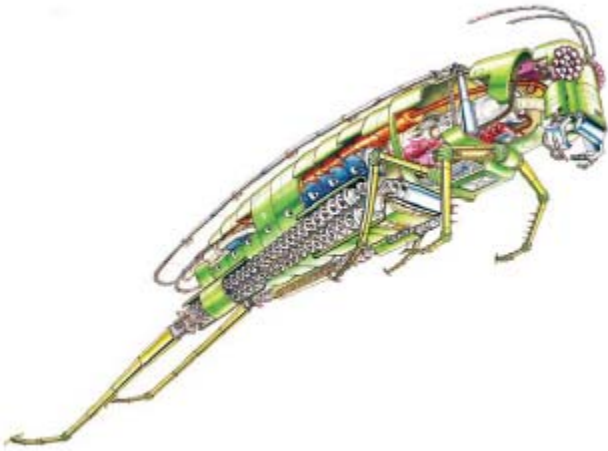
Actual Size: 0.6 – 0.9 cm

Found: Worldwide

Eats: Almost anything, but only in liquid form – they spit out saliva on to solid foods to predigest it, then suck it back inside.

Fascinating fact: An adult house fly only lives for 15 to 25 days, but in that time a female can lay up to 500 eggs.





Grasshopper

Robot: 2.7 metres long

Actual Size: up to 8cm long

Found: Worldwide

Eats: Plants

Fascinating fact: Instead of a brain, a grasshopper has bundles of nerves, called ganglia, throughout its body.

Bat

Robot: 1.8 metres head to tail

Actual Size: From 0.33cm to 1.5m

Found: Worldwide

Eats: Insects, small mammals and fish.

Fascinating fact: Out of 1,116 species of bat only 3 are vampires that feed on blood – and they live in South America.



Giant Squid

Robot: 1.8 metres long with 5.5 metre tentacles

Actual Size: Up to 14m long

Found: In all the world's oceans

Eats: Deep-sea fish and other squid species

Fascinating fact: A giant squid's tentacles are covered in hundreds of suckers, each lined with sharp rings of teeth that attach onto prey.