



HORNIMAN
MUSEUM
& GARDENS



Go and find: adaptations

**We created these cards
to help groups of learners
explore, but everyone is
welcome to use them**

**They were designed with
Year 5 pupils at Trinity
School in Lewisham**





HORNIMAN
MUSEUM
& GARDENS



How to use these cards

- Work in small groups
- Take one pack per group
- Pick a card and read the questions together
- Find the animal and make observations
- Share your ideas with others

Please return the pack before you leave

**Go and
find...**

HORNIMAN
MUSEUM
& GARDENS



A badger

Classification: vertebrate, mammal

Habitat: underground tunnels called setts

Did you know: badgers are omnivores; they eat fruit and nuts, insects and worms, and small animals including frogs. They often cross busy roads in search of food.

Look closely. Which features help badgers to live underground?

Which human activities might threaten badgers in the UK?



**Go and
find...**

HORNIMAN
MUSEUM
& GARDENS



An animal you are curious about

Look carefully. What do you notice?

How would you classify the animal?

**Can you describe something interesting about
the animal?**



**Go and
find...**

HORNIMAN
MUSEUM
& GARDENS



A kingfisher

Classification: vertebrate, bird

Habitat: streams, rivers and lakes

Interesting fact: kingfishers dive into water to catch fish and insects. Excellent vision and water-repellent feathers mean they are superb divers.

Look carefully at the feathers. How many different colours and patterns can you see?

How might climate change be harmful to kingfishers?



**Go and
find...**

HORNIMAN
MUSEUM
& *GARDENS*



An animal you have never seen before

**Look for clues. What kind of habitat might this
animal live in?**

**Can you find another animal that lives in the
same habitat?**



**Go and
find...**

HORNIMAN
MUSEUM
& GARDENS



A weevil (long-nosed beetle)

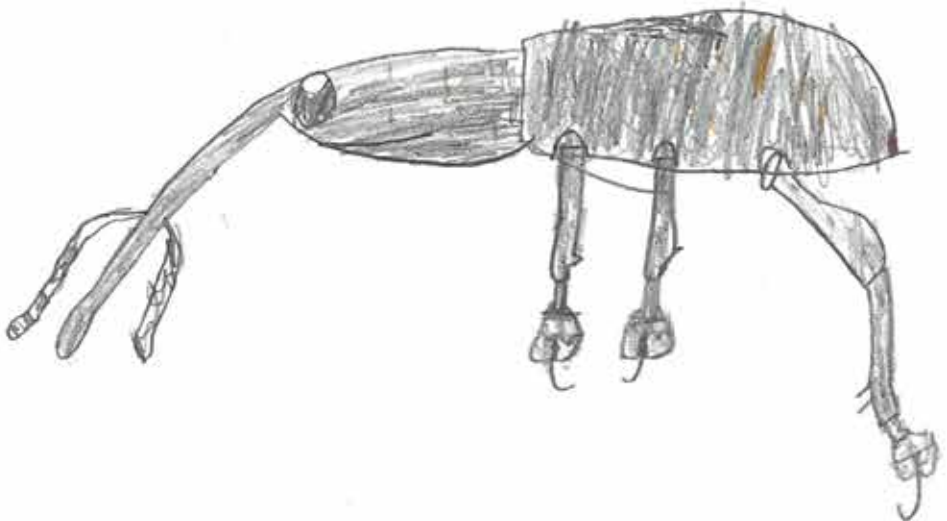
Classification: invertebrate, insect

Habitat: forests, grasslands, fields, gardens

Did you know: many long-nosed beetles feed on leaves and nectar. They have a long snout with their mouth at its tip.

Can you spot anything unusual about this beetle?

Why are insects important for habitats?



**Go and
find...**

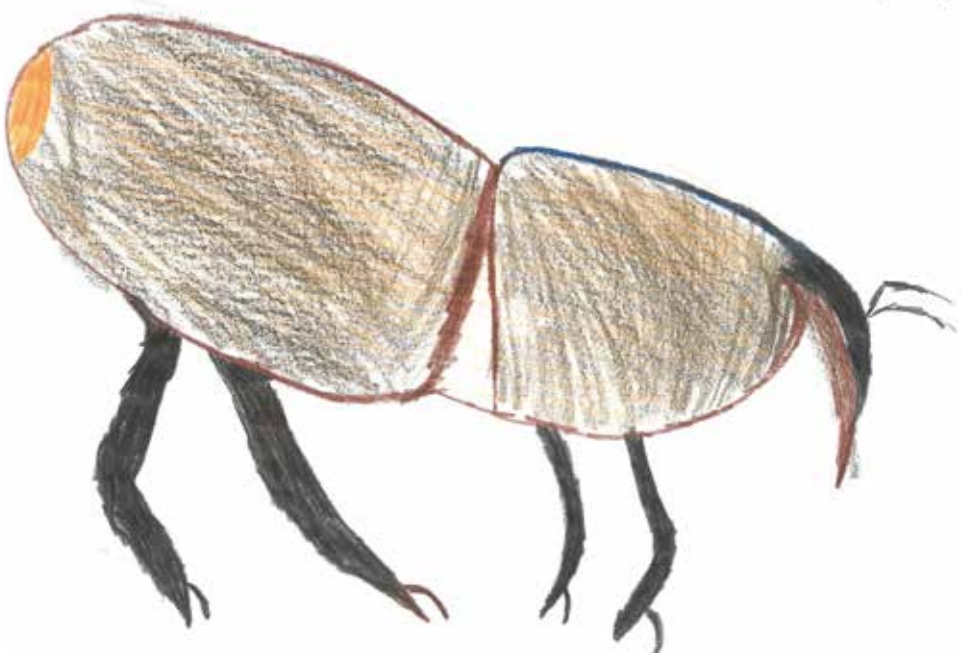
HORNIMAN
MUSEUM
& GARDENS



An animal you find interesting

Does it have any adaptations to help it protect itself or find food?

Find some more invertebrates in the space. What features do they share?



**Go and
find...**

HORNIMAN
MUSEUM
& GARDENS



A trilobite fossil

Classification: invertebrate, arthropod

Habitat: ocean

Did you know: trilobites became extinct about 250 million years ago, when a huge disaster wiped out 90% of life on Earth.

Which features helped trilobites protect themselves against predators?

Can you think of another animal that died out because its environment changed?



**Go and
find...**

HORNIMAN
MUSEUM
& *GARDENS*



An animal you like

How could you protect this animal and its habitat?

Can you think of any other ways to help local wildlife?

Explore further...

Humans have always relied on the natural world for survival

Explore our World and Music Galleries: how have natural resources been used by communities around the world?

How do you use natural resources?